
Thailand Forest Certification System (TFCS) - Introduction

Thailand Forest Certification Council - TFCC The Federation of Thai Industries



Document name: Thailand Forest Certification System (TFCS) - Introduction		
Document title: TFCC R 002:2018	Issue date: 26 February 2018	Application date: 1 March 2018
Edition No. : 1	Performed by: Mr.Surakit Darncholvichit	Approved by: Dr.Naruekamol Pookhao

Contents

1	Scope	3
2	Normative references.....	3
3	Definitions	4-6
4	Objectives of Thailand Forest Certification Council (TFCC).....	6-7
5	Basic principles	7-8
6	Organisational Structure	8-11
	6.1 TFCC	8-10
	6.2 Certification Body	10
	6.3 Accreditation Body	11
7	Process Structure.....	11-14
	7.1 Standard setting	11
	7.2 Certification	11-12
	7.3 Accreditation of certification bodies	11-12
	7.4 Notification of certification bodies	13
	7.5 Logo usage rules	11-12
	7.6 Investigation and resolution of public complaints and appeals.....	14
	Figure 1: TFCC Organisational Chart	9
	Figure 2: Thailand Forest Certification System (TFCS).....	10
	Table 1: Structure of Thailand Forest Certification System (TFCS).....	15
	Table 2: The Applicable Relationship of Thailand Forest Certification System (TFCS).....	16

Introduction

TFCC (Thailand Forest Certification Council) is the Thailand organization, promoting sustainable forest plantation management by originating certified forests and forest based products throughout forest certification system. TFCC is the national governing body of Thailand Forest Certification System (TFCS) and enhances standards and requirements for TFCS, based on stakeholder participation process.

In Thailand, F.T.I. (The Federation of Thai Industries) is acting on the PEFC Council's behalf as PEFC authorised body. In terms of the organisational chart, TFCC is acting as both an authorized body of F.T.I. and a focal point of Institute of Agro-based Industries (I.A.I) on behalf of PEFC Council's.

According to TFCS, the relationship between TFCC and Thai Industrial Standards Institute (TISI) is by means of TFCC acting as National Governing Body (NGB), on behalf of PEFC while TISI acting as standardising body for establishing Sustainable Forest Plantation Management – Requirements (TIS 14061) and Chain of Custody of Forest based Products Management – Requirements (TIS 2861).

During development process, TFCC is committed to work with related stakeholders in terms of public participation and transparency manners in order to provide more opportunities for stakeholders in developing the standards. The stages of standard development follow guideline of Standard Setting Procedures, PEFC ST 1001 and TFCC PD 006.

1 Scope

1.1 The document provides information about the scope, normative references, definitions, objectives, basic principles and organisational structure of TFCC and process structure in order to ensure good understanding of its parts and their interrelations.

1.2 The document is informative and the requirements for organisations, involved in the implementation of the systems and processes, are included in individual standards and procedures.

2 Normative references

All documented information lists below are indispensable for the application of this document. The latest edition of the referenced documents, including any amendment, applies into the masterlist of documented information.

2.1 TFCC standards and requirements (SD)

- TIS 14061, Sustainable Forest Plantation Management – Requirements
- TIS 2861, Chain of Custody of Forest based Products Management – Requirements
- PEFC ST 2001, PEFC Logo Usage Rules: Requirements
- PEFC ST 2002, Chain of Custody of Forest Based Products - Requirements
- TFCC SD 001, Specification of the TFCC Claims
- TFCC SD 002, Group Forest Management Certification – Requirements
- TFCC SD 003, TFCC Logo Usage Rules - Requirements

2.2 TFCC procedure documents (PD)

- TFCC PD 001, Issuance of TFCC Logo use licenses
- TFCC PD 002, Issuance of PEFC Logo use licenses
- TFCC PD 003, Notification of Certification Bodies for Chain of Custody and Forest Management Certification in Thailand against the requirements of the forest certification system
- TFCC PD 004, Requirements for Certification Bodies operating Certification against TFCC Forest Management Standard (TIS 14061)
- TFCC PD 005, Requirements for Certification Bodies operating Certification against TFCC Chain of Custody Standard (TIS 2861)
- TFCC PD 006, Standard Setting Procedures
- TFCC PD 007, the Investigation and Resolution of Public Complaints and Appeals Procedure
- TFCC PD 008, TFCC documented information Procedure

2.3 TFCC other documents (OD)

- TFCC G 001, TIS 14061 Indicators
- TFCC R 001, Standard Setting Report
- TFCC R 002, Thailand Forest Certification System (TFCS) - Introduction

3 Definitions

Accreditation: the third party related to a conformity assessment body and conveying formal demonstration of its competence.

Accreditation Body: a formal body accredited IAF (International Accreditation Forum) to carry out accreditation towards certification body.

Certification body: a formal body carries out conformity assessment.

Forest: a plant community in the forest that consists of the trees and other species of trees, including animals, microorganisms, and the value of the plant communities

Sustainable forest plantation management (SFM): the management to preserve and enhance the integrity of the timber (health of forest stand) in forest plantation ecosystems in the long term. Moreover, SFM can be beneficial to the people in the economic, social and environmental sustainability both now and in the future

Forest plantation resource: the products that occur at the forest plantation are not only timber and non – timber product, but also service values.

Economic plantation: the land that entrepreneurs grow the trees to utilize directly or commercial and for the other purposes. Moreover, the “forest plantation” is used in this document

Chain of Custody of forest based products: Process of handling information on the material categories of forest based products which allow the organisation to make accurate and verifiable claims on the content of certified material.

Off-product logo/label usage: the use other than on-product usage which is not referring to a specific product and the origin of raw material in PEFC/TFCC forest certification.

On-product logo/label usage: the use of PEFC or TFCC logo/label in connection with or referring to the PEFC or TFCC certified products.

Certified product: product that is certified according to CoC standard of PEFC or TFCC.

Standard: document comprising of minimum requirement as stipulated based on stakeholder participation and approved by the Industrial Products Council.

Management Unit: an organization which undertakes management and utilization of forest area based on sustainable forest management principles.

Certificate: a document issued by certification body in accordance to certification system which states that product, implemented procedure or system are meeting the defined requirement.

Forest management certification: the conformity assessment towards forest management in relation with criteria that is identified in the standard of forest management.

Chain of Custody of based Products certification: the conformity assessment towards Chain of Custody of based Products with criteria that are identified as following:

a) TFCC CoC: in case of users shall require for TFCC CoC certification with TFCC logo, label usage and claims.

b) PEFC/TFCC CoC: in case of users shall require for PEFC CoC certification by the endorsement of PEFC with PEFC logo, label usage and claims.

Stakeholder: persons, legal entities or organizations which are affected by the activities of forest management in the defined area.

Documented information system: covers requirements for identification, status (mandatory or voluntary provisions). The development and public availability of the documented information has developed and governed by TFCC as detailed below:

a) TFCC standards and requirements: established and approved by a recognised body, that provides, for common and repeated use, such as standards, rules, requirements or characteristics for activities or their results.

b) TFCC procedure documents: published by TFCC specifying mandatory procedures to be followed by the PEFC Council and/or TFCC national governing bodies in order to satisfy PEFC statutes, mission and objectives.

c) TFCC other documents: published by TFCC specifying mandatory or voluntary in terms of systematic or supplementary documents for implementing and evaluating systems such as guidelines, work instructions, forms and others.

d) TFCC documented information: can be in any external documents, formats and medias, and from any sources, including to public information, brochures, videos, or multimedia, relating to TFCC implementations and activities.

4 Objectives of the Thailand Forest Certification Council (TFCC)

4.1 The objectives of TFCC are:

a) To provide, implement and empower the sustainable forest plantation management - requirement of Thailand for well-knowing, accepting and certifying in national and international levels;

b) To promote and support forest owners/managers and forest related industries for ensuring into the standard certification process;

c) To operate and maintain the public complaints resolutions for well-knowing, accepting and certifying the sustainable forest plantation management - requirement in national, regional and international levels;

d) To act as a focal point of Thailand forest certification system for cooperating, training and acknowledging to all stakeholders, according to the sustainable forest plantation management - requirement;

e) To promote and support research and development together with innovation manner, according to the sustainable forest plantation management – requirement;

f) To act as a focal point of marketing center for farmers, manufacturers and consumers in national and international levels.

5 Basic principles

5.1 Thailand Forest Certification System (TFCS) is based on the following principles:

a) **Earth Summit 1992:** The definition and requirements of the sustainable forest management are based on internationally agreed principles and criteria defined by the Intergovernmental organisations, such as United Nations Conference on Environment and Development (UNCED) in 1992 in Brazil on 3 - 14 June 1992 together with 172 parties ratified. Thailand has involved into 3 sustainable development pillars such as Biological Diversity, Climate Change and Combat Desertification;

b) **REDD 2005:** According to United Nations Framework Convention on Climate Change Meeting (UNFCCC COP11) in Canada on 28 November - 10 December 2005, the minute meeting was adopted the principle of Reducing Emission from Deforestation and Forest Degradation in Developing Countries (REDD) in order to enhance the main policy for reducing emission from deforestation and forest degradation in developing countries. As a result, the Intergovernmental Panel on Climate Change (IPCC) indicated that 20% of carbon emission was from forestry management sector;

c) **Paris Agreement 2020:** Climate Change COP21, held in France on 30 November - 12 December 2558 with 161 parties rectified. The Paris Agreement's aim is to strengthen the global response to the threat of climate change by keeping a global temperature rise this century well below 2 degrees Celsius above pre-industrial levels and to pursue efforts to limit the temperature increase even further to 1.5 degrees Celsius. Additionally, the agreement aims to strengthen the ability of countries to deal with the impacts of climate change. To reach these ambitious goals, appropriate financial flows, a new technology framework and an enhanced capacity building framework will be put in place, and a part of climate change an global warming is carbon emission from forestry management sector;

d) **The 12th National Economic and Social Development Plan A.D. 2017-2021 (B.E. 2560–2564):**

- 3rd strategy: Strengthening of economic base and marketable access sustainably with key purpose for:
 - To strengthen economic base for stable and sustainable expansion of market access.
- 4th strategy: Enhancement of the environmental – friendly growth and sustainable development with the key purposes for:

- To conserve and rehabilitate natural resources and sustainable exploitation and equality.
- To baseline the national water resources stability and overall efficiency management of water resources.
- To enhance environmental management and pollution reduction for better environmental quality.
- To empower the capacity building of GHG adaptation and mitigation for reducing impacts from climate change and natural disaster.

e) National and international legislation and compliance relevant to forest and environmental management, occupational health and safety, labour rights and the requirements for sustainable forest management;

f) Requirements for sustainable forest plantation management are defined with standard – setting and stakeholder participation processes;

g) The competence of the certification bodies are assessed by the accreditation body;

h) The competence of accreditation body is confirmed through the accreditation body membership in the International Accreditation Forum (IAF) and its multi-lateral agreements;

i) The conformity assessment, including its certification and accreditation functions, are following to the internationally recognised requirements for the conformity assessment;

j) All organisations and their respective functions within TFCS shall be supported by efficient dispute settlement procedures.

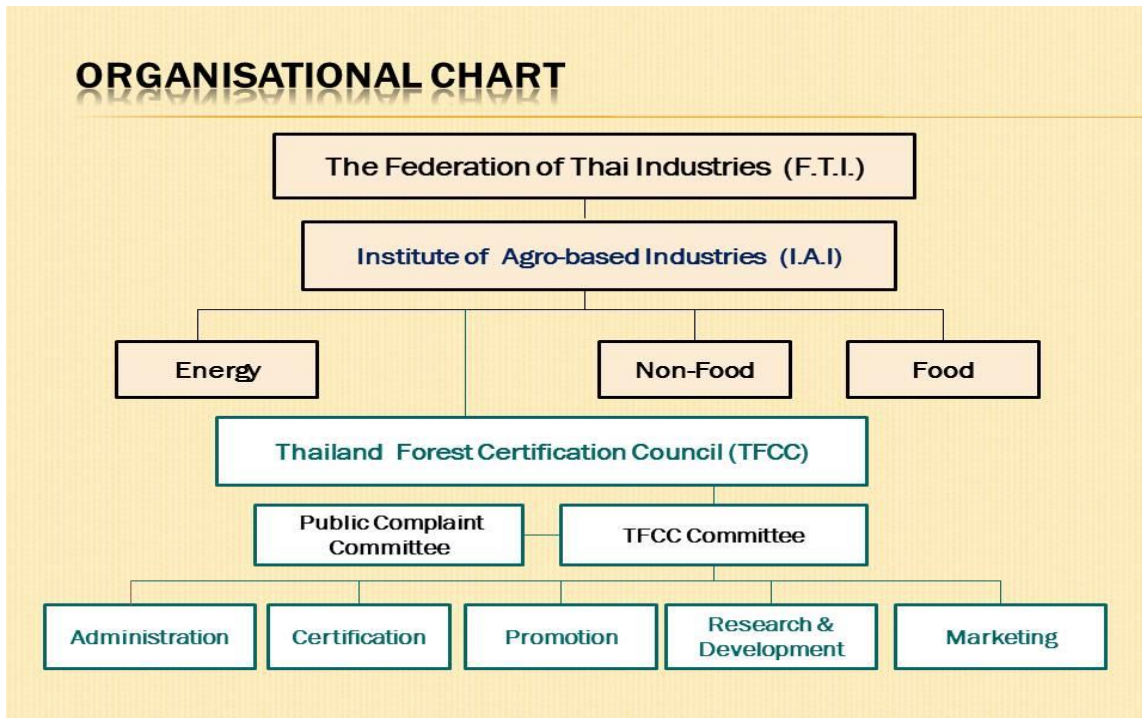
6 Organisational structure

6.1 TFCC

6.1.1 In Thailand, The Federation of Thai Industries (F.T.I.) acts as PEFC authorised body on behalf of the PEFC Council's as National Governing Body (NGB).

In terms of the organisational chart, F.T.I. acts as NGB, on behalf of the PEFC Council's, and Institute of Agro-based Industries (I.A.I) belongs to F.T.I. in terms of the organisational structure. Therefore, TFCC acts as an authorized body of both a focal point of I.A.I and F.T.I., on behalf of PEFC Council. TFCC has empowered by all sectoral stakeholders and establishes the sustainable forest plantation management system for well-known in international level together with acknowledgement and implementation of forest certification system (as shown in **Figure 1: TFCC Organisational Chart**)

Figure 1: TFCC Organisational Chart



TFCC acts as the national governing body on behalf of F.T.I., promoting sustainable forest plantation management through Forest Management certification, Chain of Custody certification and labeling of forest based products. Products with TFCC claim and/or label deliver confidence that raw material originates in sustainably managed forest, based on PEFC System with responsible for the following functions:

a) Participation Development of the standards and requirements of the Sustainable Forest Plantation Management and Chain of Custody of Forest based Products Management in terms of TFCS;

b) Notification of Certification Bodies for Chain of Custody and Forest Management Certification in Thailand against the requirements of TFCS;

c) Issuance of PEFC and TFCC Logo use licenses, TFCC Logo Usage and Licensing of the label(s) of TFCC;

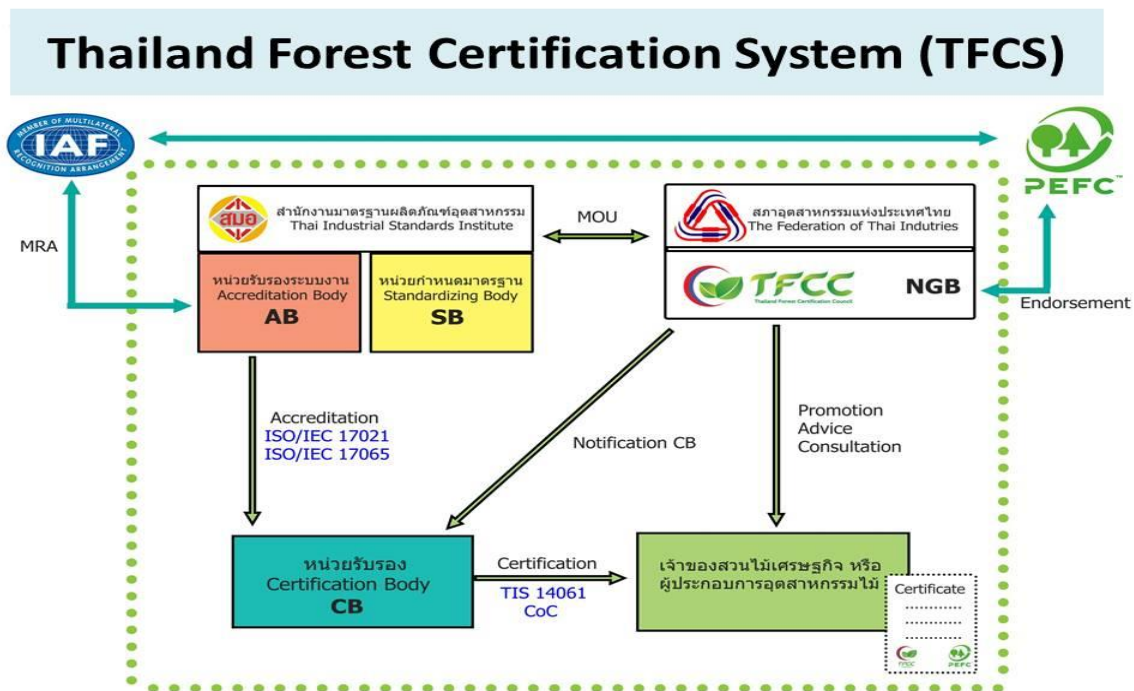
d) Promotion and marketing access of TFCS;

e) International recognition of TFCS as well as forest certification network further.

6.1.2 According to TFCS, Thailand has separated NGB and SB by means of operating and standardizing system. TFCC acts as National Governing Body (NGB), on behalf of PEFC while TIS acts as standardising body for establishing Sustainable Forest Plantation Management – Requirements (TIS 14061) and Chain of Custody of Forest based Products Management – Requirements (TIS 2861).

6.1.3 TFCS has cooperative relationship between Accreditation and Certification Bodies, typically involved in the certification or accreditation processes, as shown in **Figure 2: Thailand Forest Certification System (TFCS)** below:

Figure 2: Thailand Forest Certification System (TFCS)



6.2 Certification Body

6.2.1 The certification bodies provide auditing and certification/registration services with conformity assessment - demonstration that specified requirements relating to a product, process, system, person or body are fulfilled to the TFCS.

6.2.2 The certification bodies are independent of the governance structure of TFCS and cannot be involved in the standard setting process as governing or decision making body.

6.2.3 TFCC sets up requirements for Certification Bodies operating Certification against TFCC Forest Management Standard (TFCC PD 004) and requirements for Certification Bodies operating Certification against TFCC Chain of Custody Standard (TFCC PD 005) to ensure their impartiality and competence.

6.2.4 The certification bodies' compliance with the Certification Body Requirements is assessed and regularly surveyed by an accreditation body.

6.2.5 TFCC officially notifies certification bodies meeting the requirements for the Certification Body Requirements and being accredited by an accreditation body.

6.2.6 TFCC allows unlimited access of the certification bodies to the certification services against the TFCS.

6.3 Accreditation Body

6.3.1 Accreditation body provides oversight to certification bodies by an assessment and surveillance processes to ensure their impartiality and competence with recognised international standards and requirements of Thailand Industrial Standards Institute (TISI).

6.3.2 Accreditation body complies with the ISO 17011 and are members of the International Accreditation Forum (IAF) which assesses and surveys their impartiality and competence defined by ISO 17011 and additional IAF requirements.

6.3.3 TFCC recognizes accreditation issued by Accreditation Body that is a member of IAF.

7 Process structure

7.1 Standard setting

7.1.1 TFCC develops its standard setting requirements with stakeholder participation process.

7.1.2 The standard setting process includes stakeholder mapping, standard setting invitation of stakeholders to nominate their representatives to the working group/committee, working group/committee creation, development a draft document, public consultation, final draft document, formal approval of the standard, standard publications and periodic revision of the standard those are handled by TIS while the standard testing relies on TFCC, based on the evidences of minute meeting and meeting consensus agreement. The TFCC standard setting procedure is defined in TFCC PD 006, and Standard Setting Report is defined in TFCC OD 003.

7.1.3 The standards are comprehensively reviewed and revised in regular intervals that do not exceed five years.

7.1.4 The standards are publicly available.

7.2 Certification

7.2.1 Forest plantation management certification.

7.2.1.1 TFCS applies to only forest plantation management on Thailand territory.

7.2.1.2 Forest certification is an assessment of conformity for the forest plantation management on defined forest area with the applicable requirements of TFCS.

7.2.1.3 The certification of sustainable forest plantation management is carried out against to TIS 14061.

7.2.1.4 The certification is carried out by an accredited certification body which is notified by TFCC, following the requirements in TFCC PD 004, Requirements for Certification Bodies operating Certification against TFCC Forest Management Standard (TIS 14061).

7.2.2 Chain of custody certification

7.2.2.1 Chain of custody certification applies to organisations that are making the claims on the origin of raw material in certified forests and delivers to their customers that those claims are truthful and correctable.

7.2.2.2 The chain of custody certification has 2 options for claims/labels, according to TFCC SD 001: Specification of the TFCC Claims as a part of TIS 2861 as informed below:

a) TFCC Claims/labels: in case of users shall require for TFCC CoC certification with TFCC logo, label usage and claims.

b) PEFC/TFCC Claims/labels: in case of users shall require for TFCC CoC certification by the endorsement of PEFC with PEFC logo, label usage and claims.

Note: Thereafter TFCC is endorsed by the PEFC Council, these organisations can apply options either using both the PEFC and TFCC claims and labels.

7.2.2.3 TFCC uses TIS 2861 as a part of TFCS.

7.2.2.4 The chain of custody certification is a certified process for on - product usage of PEFC ST 2001, PEFC Logo Usage Rules: Requirements and TFCC SD, TFCC Logo Usage Rules – Requirements.

7.2.2.5 The certification is carried out by an accredited certification body which is notified by TFCC, following the requirements in TFCC PD 005: Requirements for Certification Bodies operating Certification against TFCC Chain of Custody Standard (TIS 2861).

Note: Thereafter TFCC is endorsed by the PEFC Council, these organisations can apply options either using both the PEFC and TFCC claims and labels.

7.2.2.6 The chain of custody certification includes the assessment of the Due Diligence System, aiming at the risk minimisation of the used raw material originates in controversial sources as its integral and crucial part, according to TIS 2861.

7.2.2.7 The organisations with multiple sites may implement to the chain of custody as a multisite organisation following to TIS 2861, Appendix 1.

7.3 Accreditation of certification bodies

7.3.1 Accreditation for forest plantation management certification

7.3.1.1 Accreditation of certification bodies operating forest plantation management certification provides impartiality and competence of the certification bodies. The accreditation body provides initial assessment and surveillance process of the

certification bodies. The accreditation body activities are governed by ISO 17011 and relevant documents of International Accreditation Forum (IAF).

7.3.1.2 TFCC recognises accreditations that accreditation bodies are members of IAF, issued against ISO 17021-1 and covered in its scope the relevant standard of TFCS.

7.3.2 Accreditation for chain of custody certification

7.3.2.1 Accreditation of certification bodies operating chain of custody certification provides impartiality and competence of the certification bodies. The accreditation body provides initial assessment and surveillance process of the certification bodies. The accreditation body activities are governed by ISO 17011 and relevant documents of the International Accreditation Forum (IAF).

7.3.2.2 TFCC recognises accreditations that accreditation bodies are members of IAF, issued against ISO 17065 and cover in its scope of relevant standards of TFCS.

7.4 Notification of certification bodies

7.4.1 The notification is a formal recognition of a certification body to operate forest plantation management and/or chain of custody certification against TFCS on Thailand territory.

7.4.2 The notification is based on the recognised and valid accreditation(s) of the certification bodies. The assessment and surveillance processes of the certification bodies are exclusively provided by the accreditation body. TFCC procedure for the Notification of Certification Bodies for Chain of Custody and Forest Plantation Management Certification in Thailand against the requirements of the forest certification system is defined in TFCC PD 003.

7.4.3 The notification may include a notification fee paid by the certification bodies to TFCC, based on tariffs of TFCC.

7.5 Logo usage rules

7.5.1 Upon the membership in the PEFC Council, a contract on Administration between TFCC and the PEFC Council and the endorsement of TFCC by the PEFC Council, TFCC has access to the rights of PEFC logo usage and label, following PEFC ST 2001.

7.5.2 Likewise, the usage of the TFCC logo/label for on and off products is a mechanism of communication for the certified status of the organisations on their products. The usage of TFCC logo/ label, involved with the forest plantation management, wood processing and marketable access, is conditioned by the recognised forest plantation management or chain of custody certificate. TFCC logo usage rules are defined in TFCC SD 003.

7.5.3 TFCC logo/label can also be used for on and off products as specified in chapter 7.5.2.

7.5.4 The TFCC logo/label is a registered trademark, and its usage is only permitted by a license issued by TFCC, as defined in TFCC PD 001.

7.6 Investigation and resolution of public complaints and appeals

7.6.1 All processes and implementations covered by TFCC are public and transparent to the investigation and resolution of public complaints process by TFCC public complaint committee as defined in TFCC PD 007.

7.6.2 The complaints mean the effects from TFCS's operations or activities on behalf of system owner. Be responsible for;

7.6.2.1 User complaints from TFCC services and operations.

7.6.2.2 Logo Usage of PEFC and TFCC, under PEFC and TFCC's permission.

7.6.2.3 Certification Body (CB)'s qualification procedure

7.6.2.4 Accreditation body (AB)'s operations.

7.6.2.5 Standards or relevant regulations

7.6.3 The details of public complaints and appeals procedure are in the contents of public complaint channels, registration process, investigation and resolution processes by TFCC public complaint committee, the way of solving problems and evaluation and monitoring implementations, as defined in TFCC PD 007.

7.6.4 The flowchart of public complaint processes and implementations is shown into the diagram of Chapter 5, including the investigation and resolution of public complaints from TFCC public complaint committee, as defined in TFCC PD 007.

Table 1: Structure of Thailand Forest Certification System (TFCS)

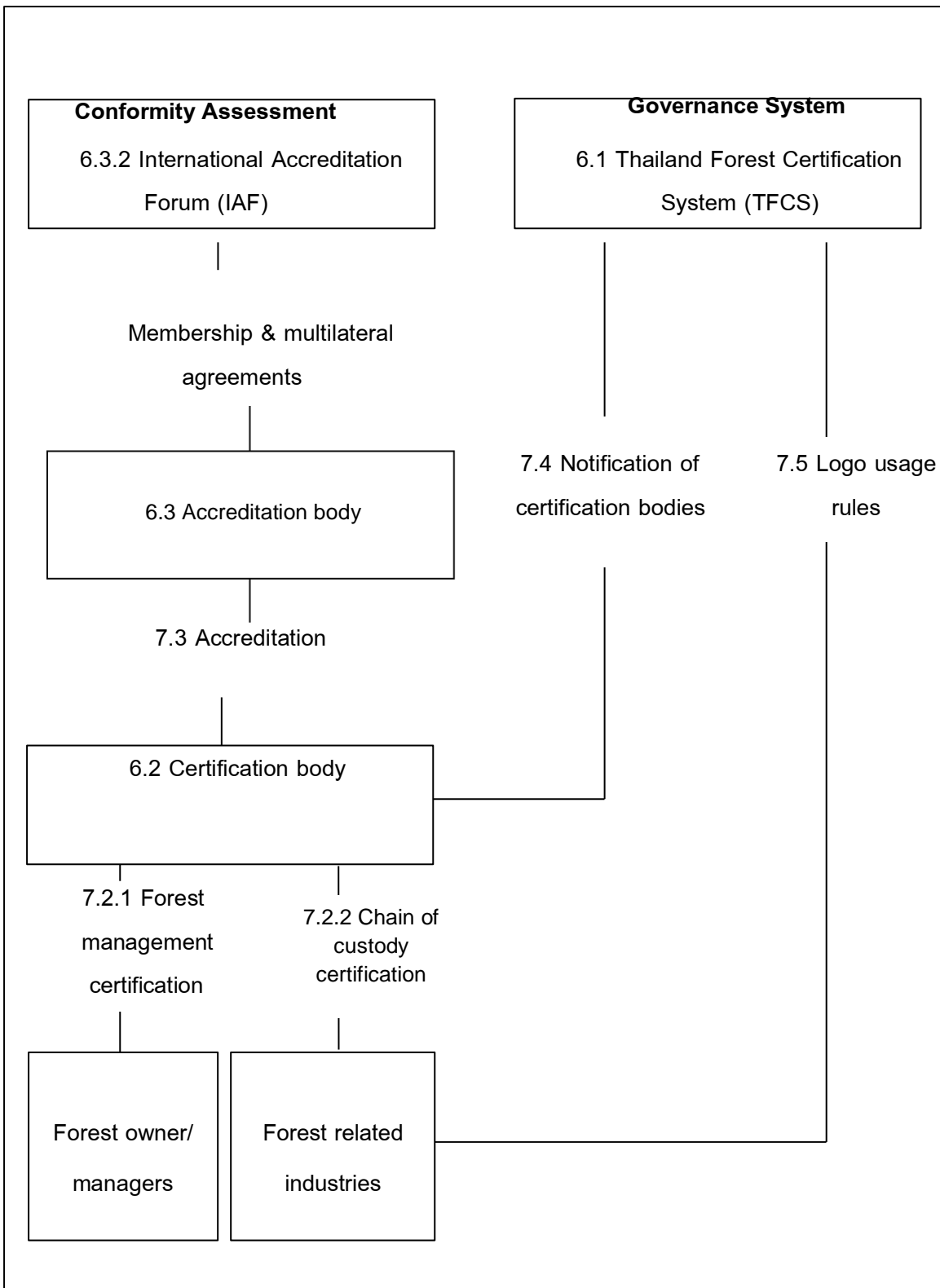


Table 2: The Applicable Documentations of TFCS Registration

No.	Document Titles:	AB/CB		System	Companies/Forest Owners	
		FM	CoC	Administration	FM	CoC
TFCC standards and requirements (SD)						
1	TIS 14061	/			/	
2	TIS 2861		/			/
3	TFCC SD 001, Specification of the TFCC Claims		/			/
4	PEFC ST 2001, PEFC Logo Usage Rules : Requirements	/	/	/	/	/
5	PEFC ST 2002, Chain of Custody of Forest Based Products - Requirements		/	/		/
6	TFCC SD 002, Group Forest Management Certification – Requirements	/			/	
7	TFCC SD 003, TFCC Logo Usage Rules - Requirements	/	/	/	/	/
TFCC procedure documents (PD)						
8	TFCC PD 001, Issuance of TFCC Logo use licenses			/		
9	TFCC PD 002, Issuance of PEFC Logo use licenses			/		
10	TFCC PD 003, Notification of Certification Bodies for Chain of Custody and Forest Management Certification in Thailand against the requirements of the forest certification system			/		
11	TFCC PD 004, Requirements for Certification Bodies operating Certification against TFCC Forest Management Standard (TIS 14061)	/		/		
12	TFCC PD 005, Requirements for Certification Bodies operating Certification against TFCC Chain of Custody Standard (TIS 2861)		/	/		

No.	Document Titles:	AB/CB		System	Companies/Forest Owners	
		FM	CoC	Administration	FM	CoC
13	TFCC PD 006, Standard Setting Procedures			/		
14	TFCC PD 007, the Investigation and Resolution of Public Complaints and Appeals Procedure			/		
15	TFCC PD 008, TFCC documented information – general requirements			/		
TFCC other documents						
16	TFCC G 001, TIS 14061 Indicators	/			/	
17	TFCC R 001, Standard Setting Report			/		
18	TFCC R 002, Thailand Forest Certification System (TFCS) - Introduction			/		

