

---

---

## Description of Producer Group in the Chain of Custody Standard by Multisite Organizations under TFCS

---

---

**Thailand Forest Certification Council - TFCC**  
**The Federation of Thai Industries**



<b>Document name:</b> Description of Producer Group in the Chain of Custody Standard by Multisite Organizations under TFCS		
<b>Document title:</b> TFCC SD 004:2019	<b>Issue date:</b> 28 October 2019	<b>Application date:</b> 28 October 2019
<b>Edition No. :</b> 1	<b>Performed by:</b>  Ms.Rungnapa Wattanavichian	<b>Approved by:</b>  Ms.Laddawan Rachurachata

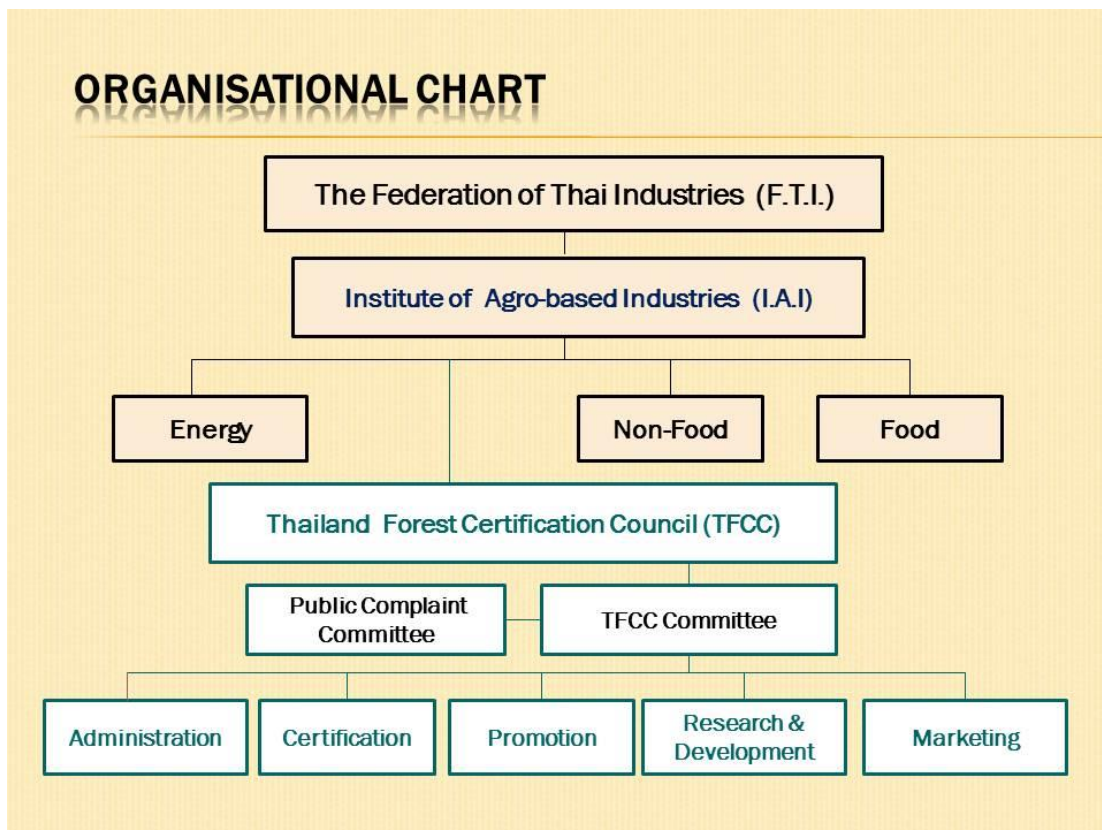
## Foreword

PEFC (Programme for the Endorsement of Forest Certification schemes) is an international organisation, and TFCC (Thailand Forest Certification Council) is a national organisation, promoting sustainable forest management through Forest Management certification, Chain of Custody certification and labeling of forest based products. Products with TFCC claim and /or label deliver confidence that raw material originates in sustainably managed forest.

PEFC is reliable to the endorsement of the national organisation under the forest certification schemes with compatible to the specifications and requirements of PEFC and functionable to the auditing programme and endorsement process.

In Thailand, F.T.I. (The Federation of Thai Industries) is acting on the PEFC Council's behalf as PEFC authorised body.

In terms of the organisational chart, TFCC is acting as an authorized body of both a focal point of Institute of Agro-based Industries (I.A.I) and F.T.I., on behalf of PEFC Council's. TFCC has empowered by all sectoral stakeholders and establishes the sustainable forest management system for well-known in international level together with acknowledgement and implementation of the international management system.



## **1 Normative references**

- PEFC ST 2002:2013, Chain of Custody of Forest Based Products - Requirements
- TIS 2861:2017, Chain of Custody of Forest Based Products - Requirements

## **2 Introduction**

The aim of this document is to replace A1.6 of the appendix A: Implementation of the Chain of Custody standard by multisite organisations of TIS 2861, in order to conform with PEFC international benchmark standard. Therefore, under Thailand Forest Certification System when companies would like to implement the Chain of Custody standard (TIS2861) by multisite organisations, the group of companies shall follow this document.

## **3 Description of producer group**

The producer group is limited to participation in sites which are domiciled in a single country and which:

- (1) have no more than 50 employees (full time employees equivalent) and**
- (2) have a turnover of maximum of 270,000,000 Baht.**

Note: The producer group is group of independent legal enterprises established and functioning for the purposes of the chain of custody certification